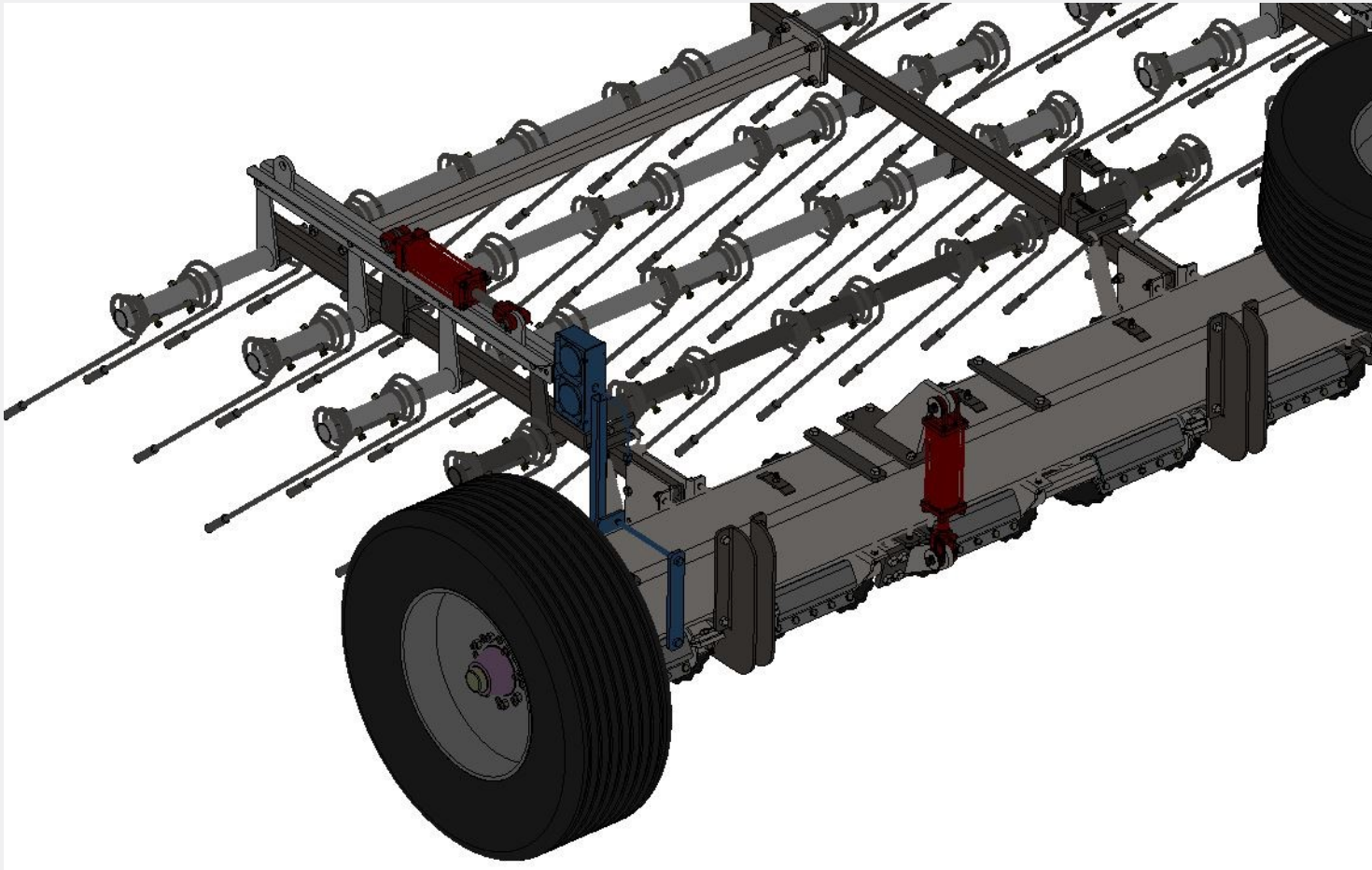
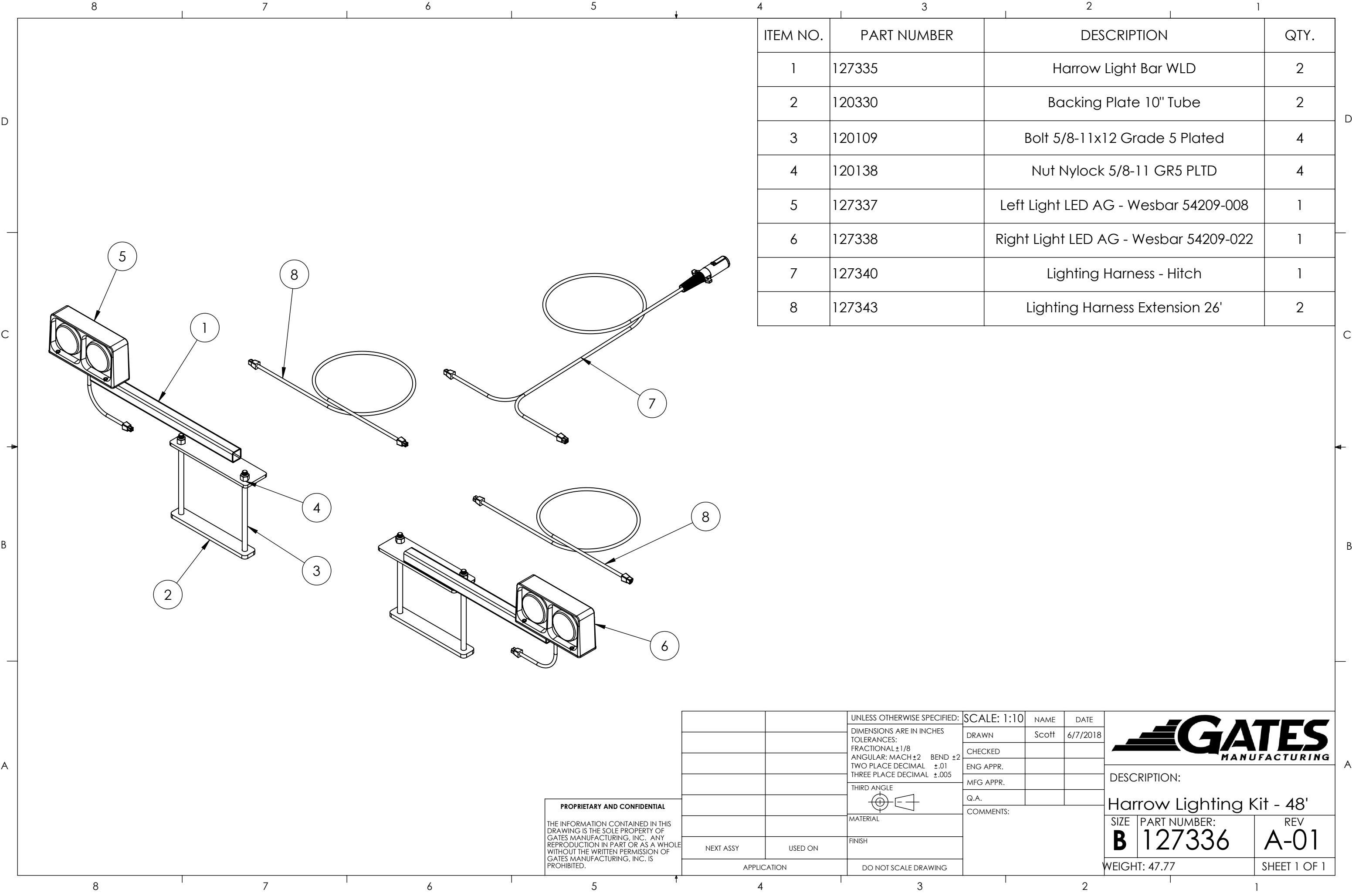


HARROW LIGHTING




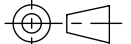
PARTS BOOK

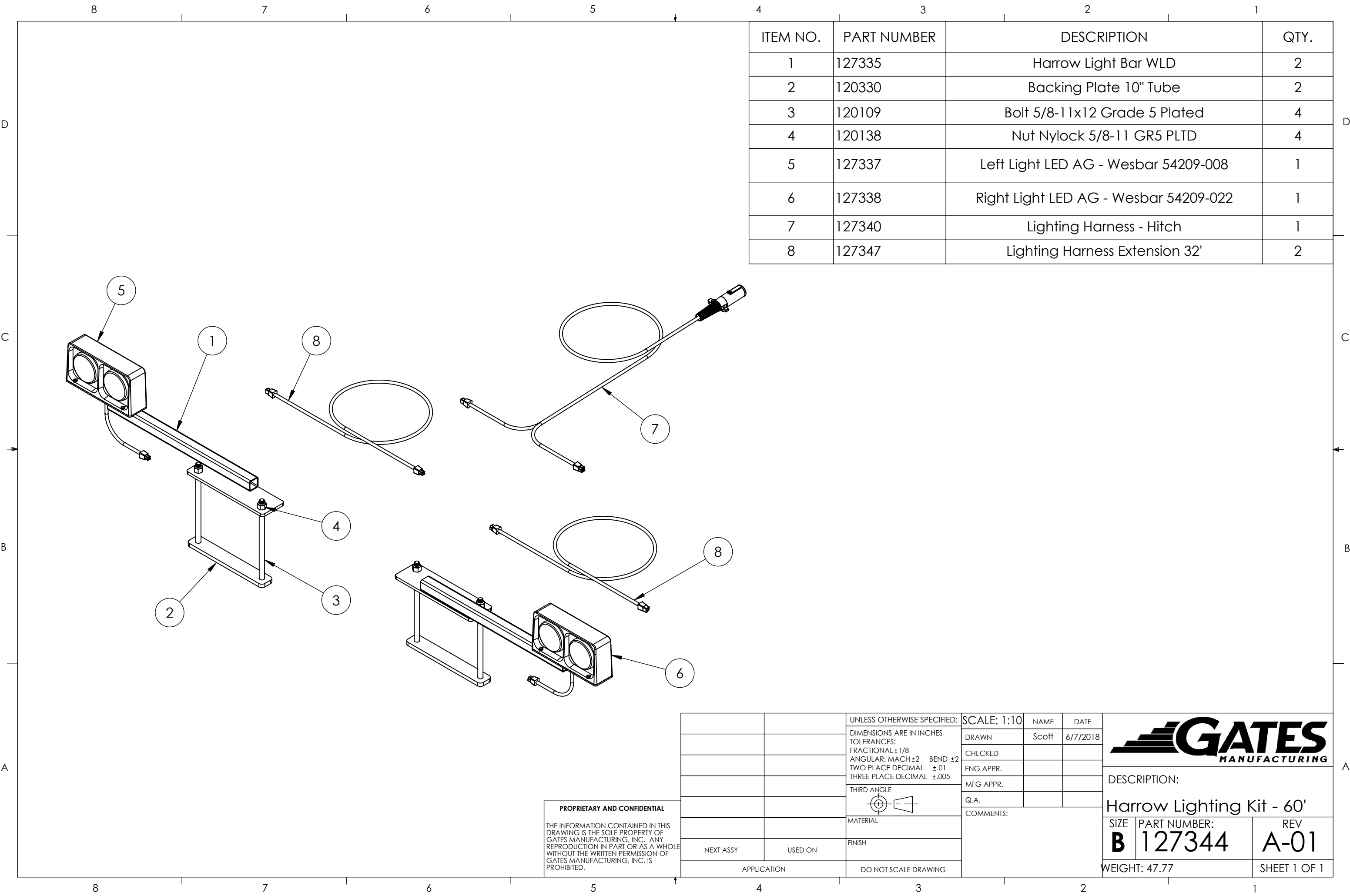


ITEM NO.	PART NUMBER	DESCRIPTION	QTY.
1	127335	Harrow Light Bar WLD	2
2	120330	Backing Plate 10" Tube	2
3	120109	Bolt 5/8-11x12 Grade 5 Plated	4
4	120138	Nut Nylock 5/8-11 GR5 PLTD	4
5	127337	Left Light LED AG - Wesbar 54209-008	1
6	127338	Right Light LED AG - Wesbar 54209-022	1
7	127340	Lighting Harness - Hitch	1
8	127343	Lighting Harness Extension 26'	2

PROPRIETARY AND CONFIDENTIAL

THE INFORMATION CONTAINED IN THIS DRAWING IS THE SOLE PROPERTY OF GATES MANUFACTURING, INC. ANY REPRODUCTION IN PART OR AS A WHOLE WITHOUT THE WRITTEN PERMISSION OF GATES MANUFACTURING, INC. IS PROHIBITED.

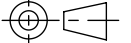
		UNLESS OTHERWISE SPECIFIED:	SCALE: 1:10	NAME	DATE			
		DIMENSIONS ARE IN INCHES	DRAWN	Scott	6/7/2018			
		TOLERANCES:	CHECKED					
		FRACTIONAL ± 1/8	ENG APPR.					
		ANGULAR: MACH ±2 BEND ±2	MFG APPR.					
		TWO PLACE DECIMAL ±.01	Q.A.			DESCRIPTION: Harrow Lighting Kit - 48'		
		THREE PLACE DECIMAL ±.005	COMMENTS:					
		THIRD ANGLE				SIZE	PART NUMBER:	REV
						B	127336	A-01
		MATERIAL						
NEXT ASSY	USED ON	FINISH				WEIGHT: 47.77		
APPLICATION		DO NOT SCALE DRAWING				SHEET 1 OF 1		




ITEM NO.	PART NUMBER	DESCRIPTION	QTY.
1	127335	Harrow Light Bar WLD	2
2	120330	Backing Plate 10" Tube	2
3	120109	Bolt 5/8-11x12 Grade 5 Plated	4
4	120138	Nut Nylock 5/8-11 GR5 PLTD	4
5	127337	Left Light LED AG - Wesbar 54209-008	1
6	127338	Right Light LED AG - Wesbar 54209-022	1
7	127340	Lighting Harness - Hitch	1
8	127347	Lighting Harness Extension 32'	2

PROPRIETARY AND CONFIDENTIAL

THE INFORMATION CONTAINED IN THIS DRAWING IS THE SOLE PROPERTY OF GATES MANUFACTURING, INC. ANY REPRODUCTION IN PART OR AS A WHOLE WITHOUT THE WRITTEN PERMISSION OF GATES MANUFACTURING, INC. IS PROHIBITED.

		UNLESS OTHERWISE SPECIFIED:	SCALE: 1:10	NAME	DATE
		DIMENSIONS ARE IN INCHES	DRAWN	Scott	6/7/2018
		TOLERANCES:	CHECKED		
		FRACTIONAL $\pm 1/8$	ENG APPR.		
		ANGULAR: MACH ± 2 BEND ± 2	MFG APPR.		
		TWO PLACE DECIMAL $\pm .01$	Q.A.		
		THREE PLACE DECIMAL $\pm .005$	COMMENTS:		
		THIRD ANGLE			
					
		MATERIAL			
		FINISH			
NEXT ASSY	USED ON				
APPLICATION		DO NOT SCALE DRAWING			



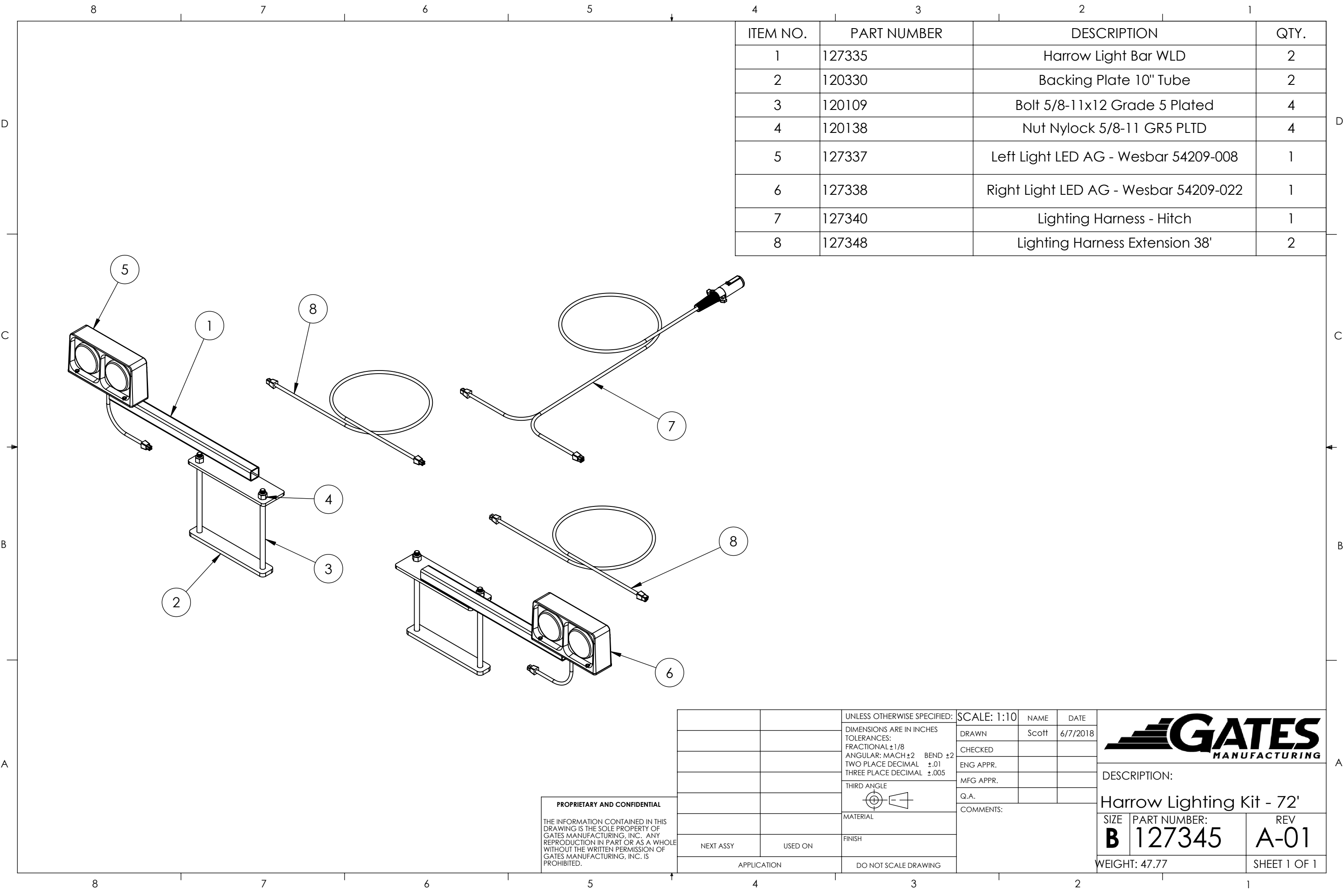
DESCRIPTION:

Harrow Lighting Kit - 60'

SIZE	PART NUMBER:	REV
B	127344	A-01

WEIGHT: 47.77


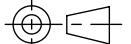
SHEET 1 OF 1

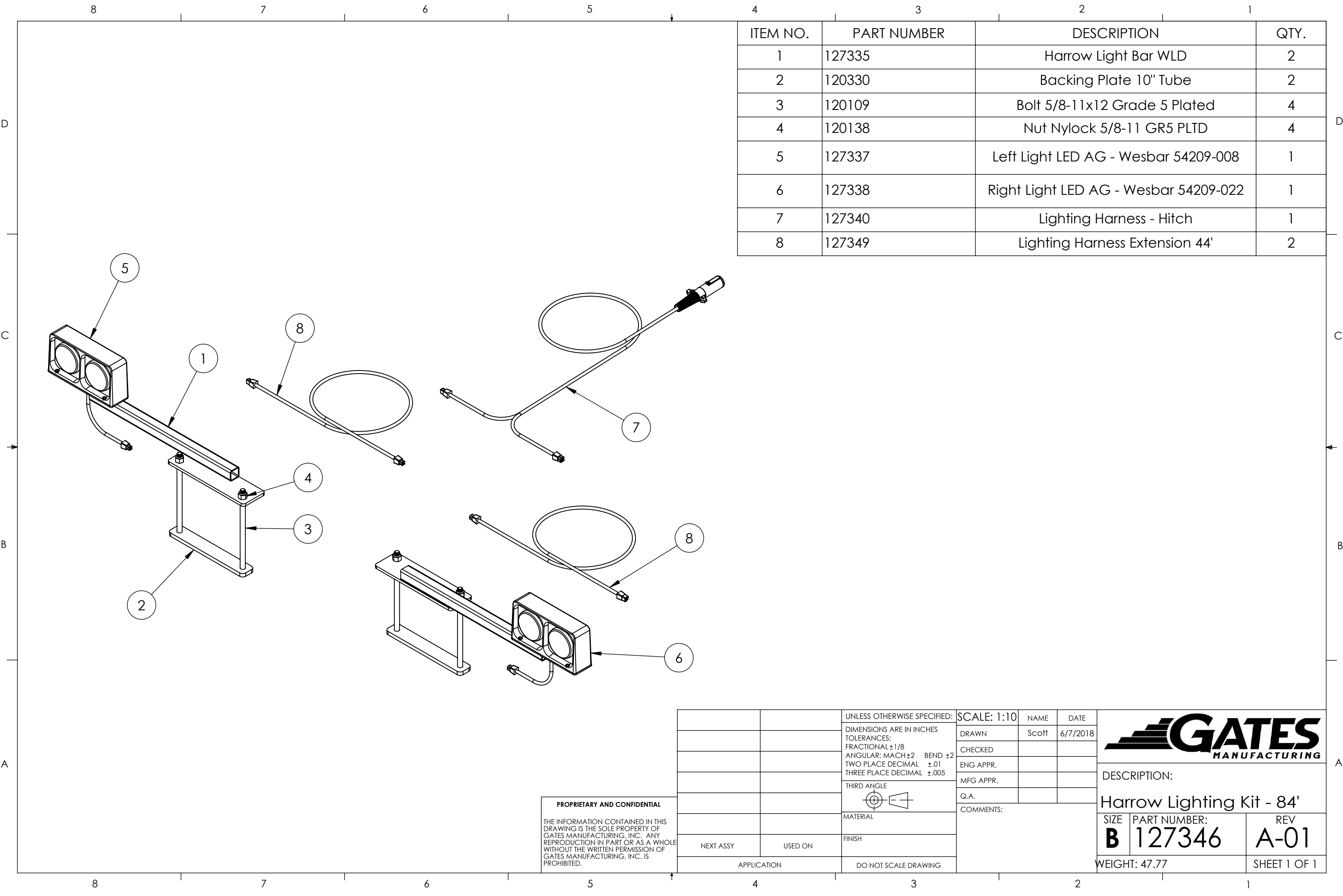


ITEM NO.	PART NUMBER	DESCRIPTION	QTY.
1	127335	Harrow Light Bar WLD	2
2	120330	Backing Plate 10" Tube	2
3	120109	Bolt 5/8-11x12 Grade 5 Plated	4
4	120138	Nut Nylock 5/8-11 GR5 PLTD	4
5	127337	Left Light LED AG - Wesbar 54209-008	1
6	127338	Right Light LED AG - Wesbar 54209-022	1
7	127340	Lighting Harness - Hitch	1
8	127348	Lighting Harness Extension 38'	2

PROPRIETARY AND CONFIDENTIAL

THE INFORMATION CONTAINED IN THIS DRAWING IS THE SOLE PROPERTY OF GATES MANUFACTURING, INC. ANY REPRODUCTION IN PART OR AS A WHOLE WITHOUT THE WRITTEN PERMISSION OF GATES MANUFACTURING, INC. IS PROHIBITED.


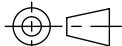
		UNLESS OTHERWISE SPECIFIED:	SCALE: 1:10	NAME	DATE				
		DIMENSIONS ARE IN INCHES	DRAWN	Scott	6/7/2018				
		TOLERANCES:	CHECKED						
		FRACTIONAL ± 1/8	ENG APPR.						
		ANGULAR: MACH ±2 BEND ±2	MFG APPR.						
		TWO PLACE DECIMAL ±.01	Q.A.			DESCRIPTION: Harrow Lighting Kit - 72'			
		THREE PLACE DECIMAL ±.005	COMMENTS:						
		THIRD ANGLE 							
		MATERIAL					SIZE	PART NUMBER:	REV
NEXT ASSY	USED ON	FINISH					B	127345	A-01
APPLICATION		DO NOT SCALE DRAWING					WEIGHT: 47.77		SHEET 1 OF 1



ITEM NO.	PART NUMBER	DESCRIPTION	QTY.
1	127335	Harrow Light Bar WLD	2
2	120330	Backing Plate 10" Tube	2
3	120109	Bolt 5/8-11x12 Grade 5 Plated	4
4	120138	Nut Nylock 5/8-11 GR5 PLTD	4
5	127337	Left Light LED AG - Wesbar 54209-008	1
6	127338	Right Light LED AG - Wesbar 54209-022	1
7	127340	Lighting Harness - Hitch	1
8	127349	Lighting Harness Extension 44'	2

PROPRIETARY AND CONFIDENTIAL

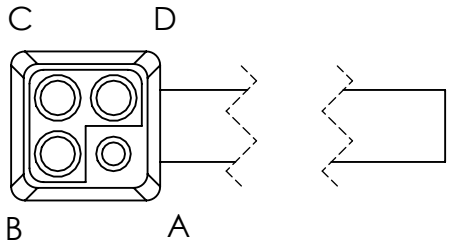
THE INFORMATION CONTAINED IN THIS DRAWING IS THE SOLE PROPERTY OF GATES MANUFACTURING, INC. ANY REPRODUCTION IN PART OR AS A WHOLE WITHOUT THE WRITTEN PERMISSION OF GATES MANUFACTURING, INC. IS PROHIBITED.

		UNLESS OTHERWISE SPECIFIED:	SCALE: 1:10	NAME	DATE			
		DIMENSIONS ARE IN INCHES	DRAWN	Scott	6/7/2018			
		TOLERANCES:	CHECKED					
		FRACTIONAL ± 1/8	ENG APPR.					
		ANGULAR: MACH ±2 BEND ±2	MFG APPR.			DESCRIPTION: Harrow Lighting Kit - 84'		
		TWO PLACE DECIMAL ±.01	Q.A.					
		THREE PLACE DECIMAL ±.005	COMMENTS:					
		THIRD ANGLE				SIZE	PART NUMBER:	REV
								
		MATERIAL						
		FINISH						
NEXT ASSY	USED ON					B	127346	A-01
APPLICATION		DO NOT SCALE DRAWING				WEIGHT: 47.77		
						SHEET 1 OF 1		

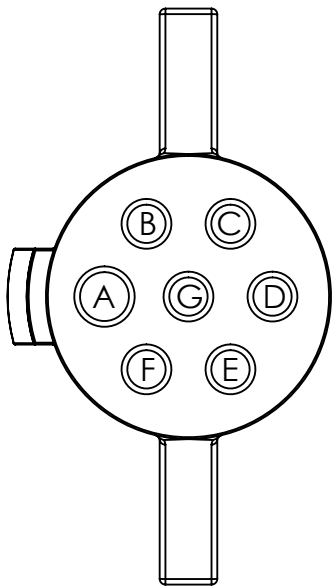
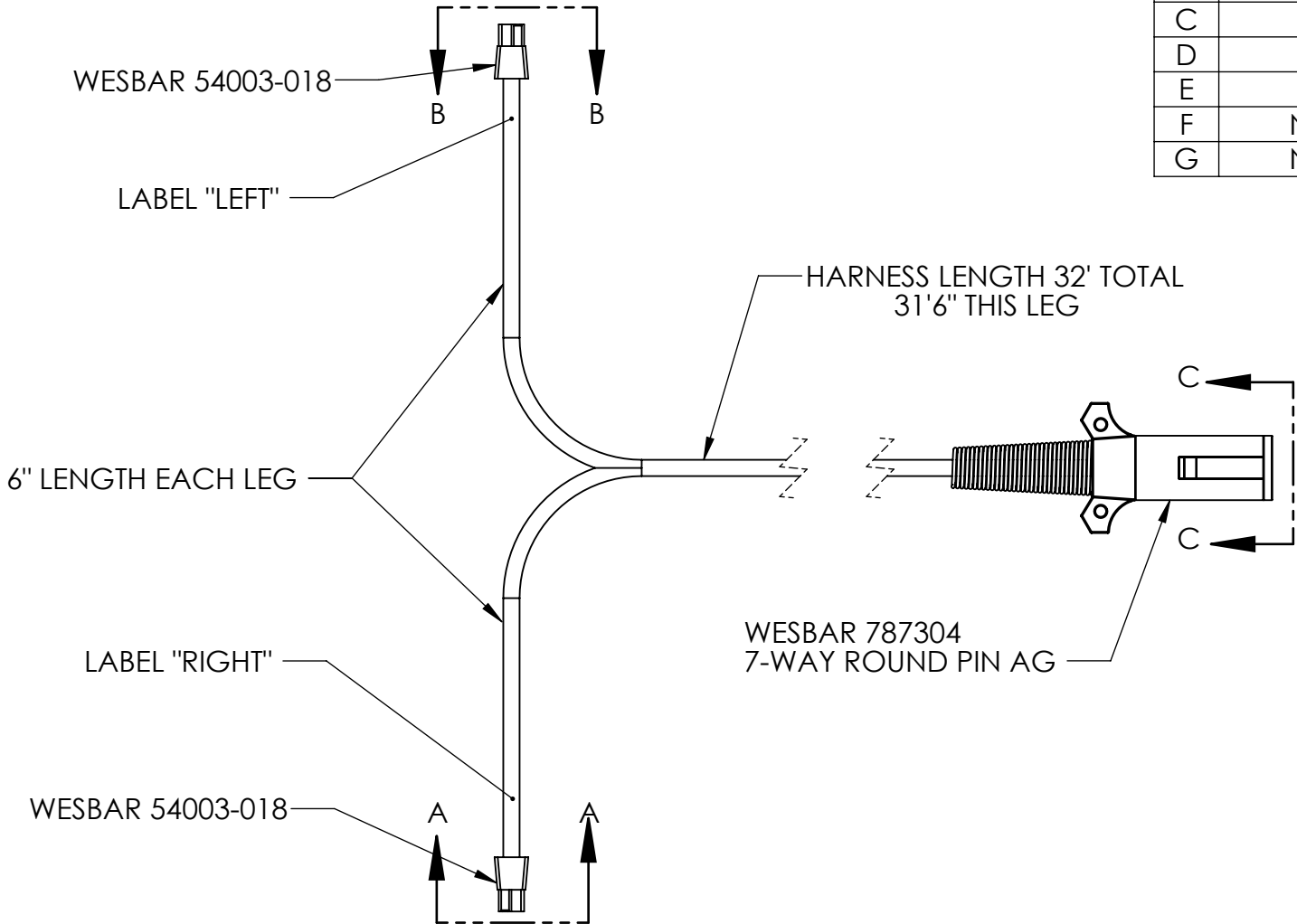
*USE BRAIDED WIRE LOOMS AND SHRINK TUBES ON CONNECTOR ENDS

SECTION B-B
SCALE 1 : 1

A	WHITE	16AWG
B	RED	16AWG
C	BROWN	16AWG
D	YELLOW	16AWG

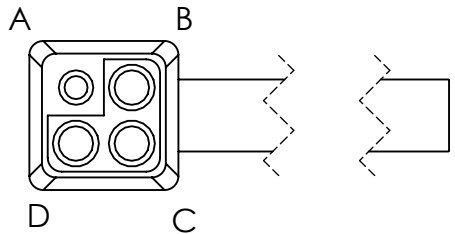


A	WHITE	GROUND	16AWG
B	BROWN	TAIL	16AWG
C	GREEN	RIGHT TURN	16AWG
D	RED	STOP	16AWG
E	YELLOW	LEFT TURN	16AWG
F	NOT USED		
G	NOT USED		



SECTION C-C
SCALE 1 : 1


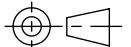
A	WHITE	16AWG
B	RED	16AWG
C	BROWN	16AWG
D	GREEN	16AWG



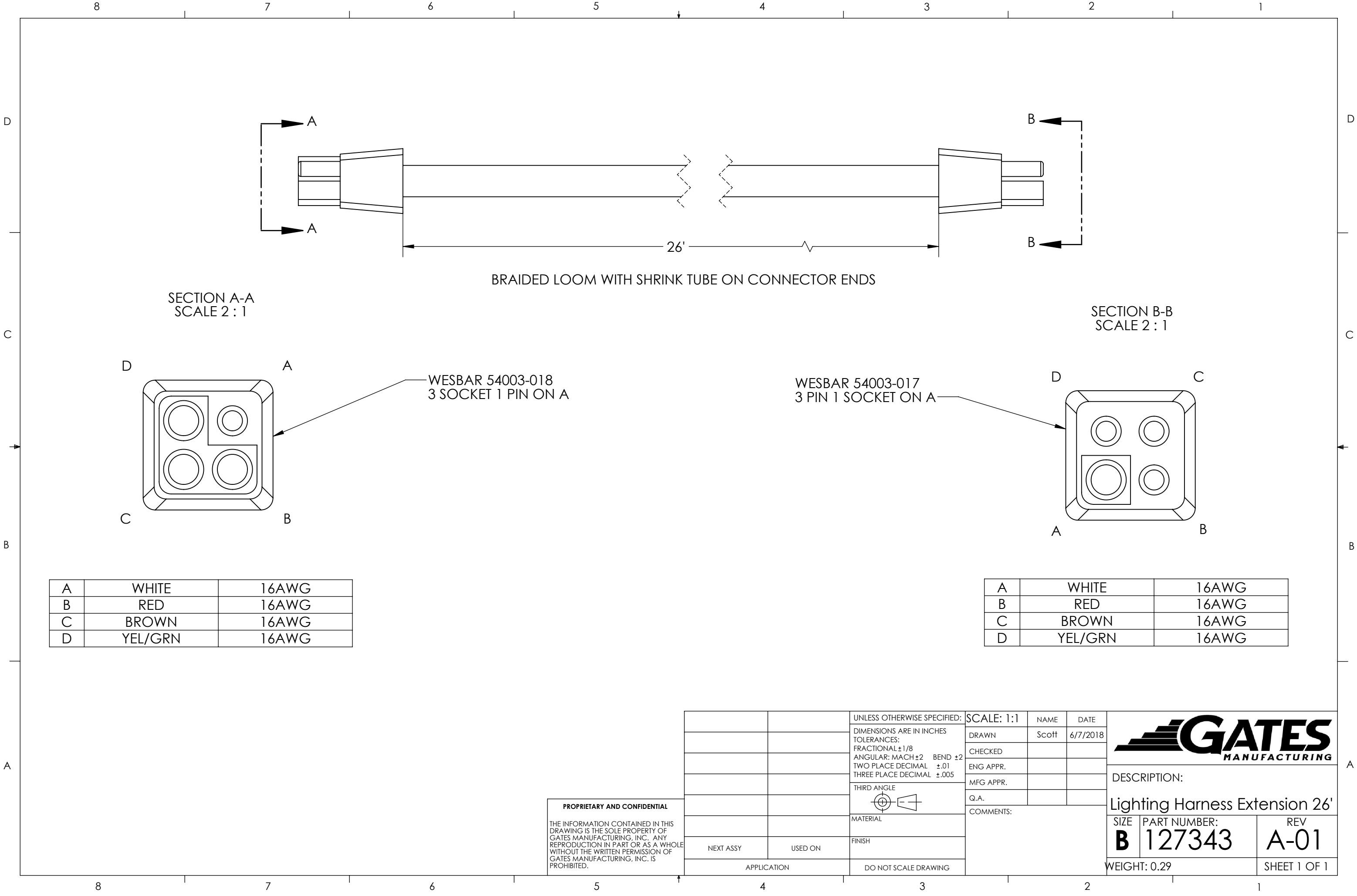
SECTION A-A
SCALE 1 : 1

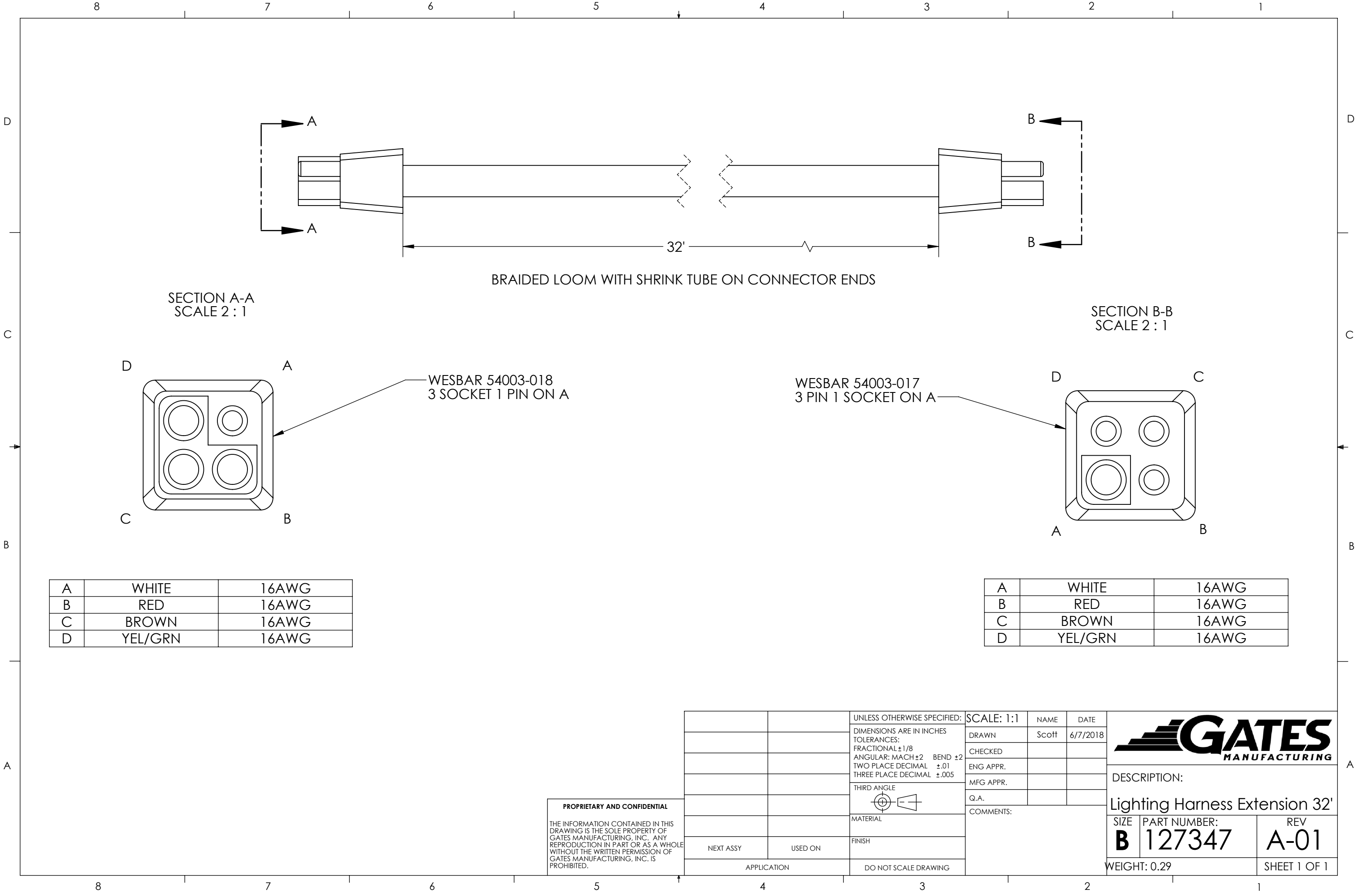
PROPRIETARY AND CONFIDENTIAL

THE INFORMATION CONTAINED IN THIS DRAWING IS THE SOLE PROPERTY OF GATES MANUFACTURING, INC. ANY REPRODUCTION IN PART OR AS A WHOLE WITHOUT THE WRITTEN PERMISSION OF GATES MANUFACTURING, INC. IS PROHIBITED.

		UNLESS OTHERWISE SPECIFIED: DIMENSIONS ARE IN INCHES TOLERANCES: FRACTIONAL ± 1/8 ANGULAR: MACH ±2 BEND ±2 TWO PLACE DECIMAL ±.01 THREE PLACE DECIMAL ±.005	SCALE: 1:4	NAME	DATE	
			DRAWN	Scott	6/6/2018	
			CHECKED			
			ENG APPR.			
			MFG APPR.			
			Q.A.			
		THIRD ANGLE 	COMMENTS:			
		MATERIAL				
		FINISH				
NEXT ASSY	USED ON					
APPLICATION		DO NOT SCALE DRAWING				

DESCRIPTION:		
Lighting Harness - Hitch		
SIZE B	PART NUMBER: 127340	REV A-02
WEIGHT: 0.76		SHEET 1 OF 1





SECTION A-A
SCALE 2 : 1

SECTION B-B
SCALE 2 : 1

WESBAR 54003-018
3 SOCKET 1 PIN ON A

WESBAR 54003-017
3 PIN 1 SOCKET ON A

A	WHITE	16AWG
B	RED	16AWG
C	BROWN	16AWG
D	YEL/GRN	16AWG

A	WHITE	16AWG
B	RED	16AWG
C	BROWN	16AWG
D	YEL/GRN	16AWG

PROPRIETARY AND CONFIDENTIAL

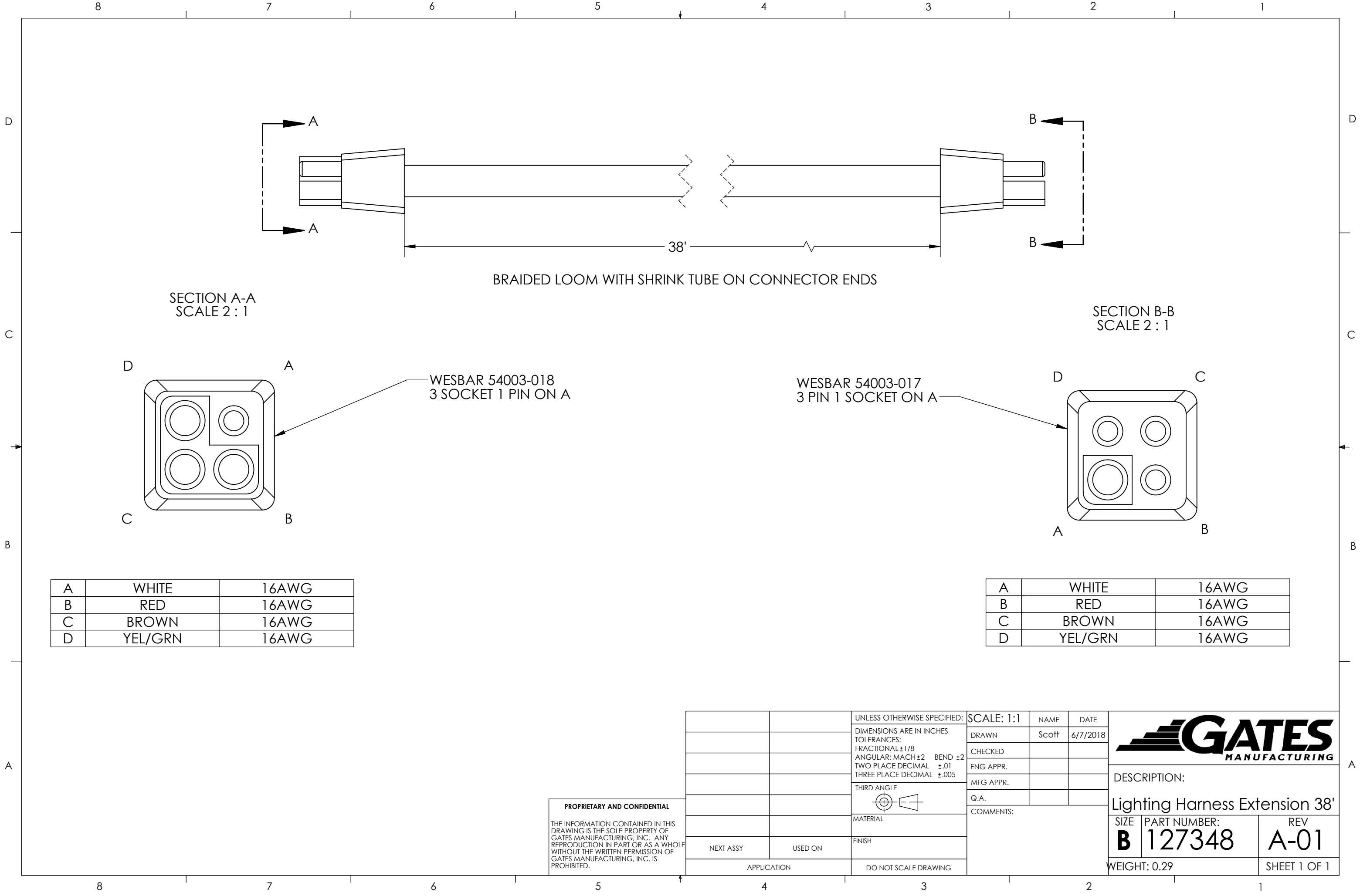
THE INFORMATION CONTAINED IN THIS DRAWING IS THE SOLE PROPERTY OF GATES MANUFACTURING, INC. ANY REPRODUCTION IN PART OR AS A WHOLE WITHOUT THE WRITTEN PERMISSION OF GATES MANUFACTURING, INC. IS PROHIBITED.

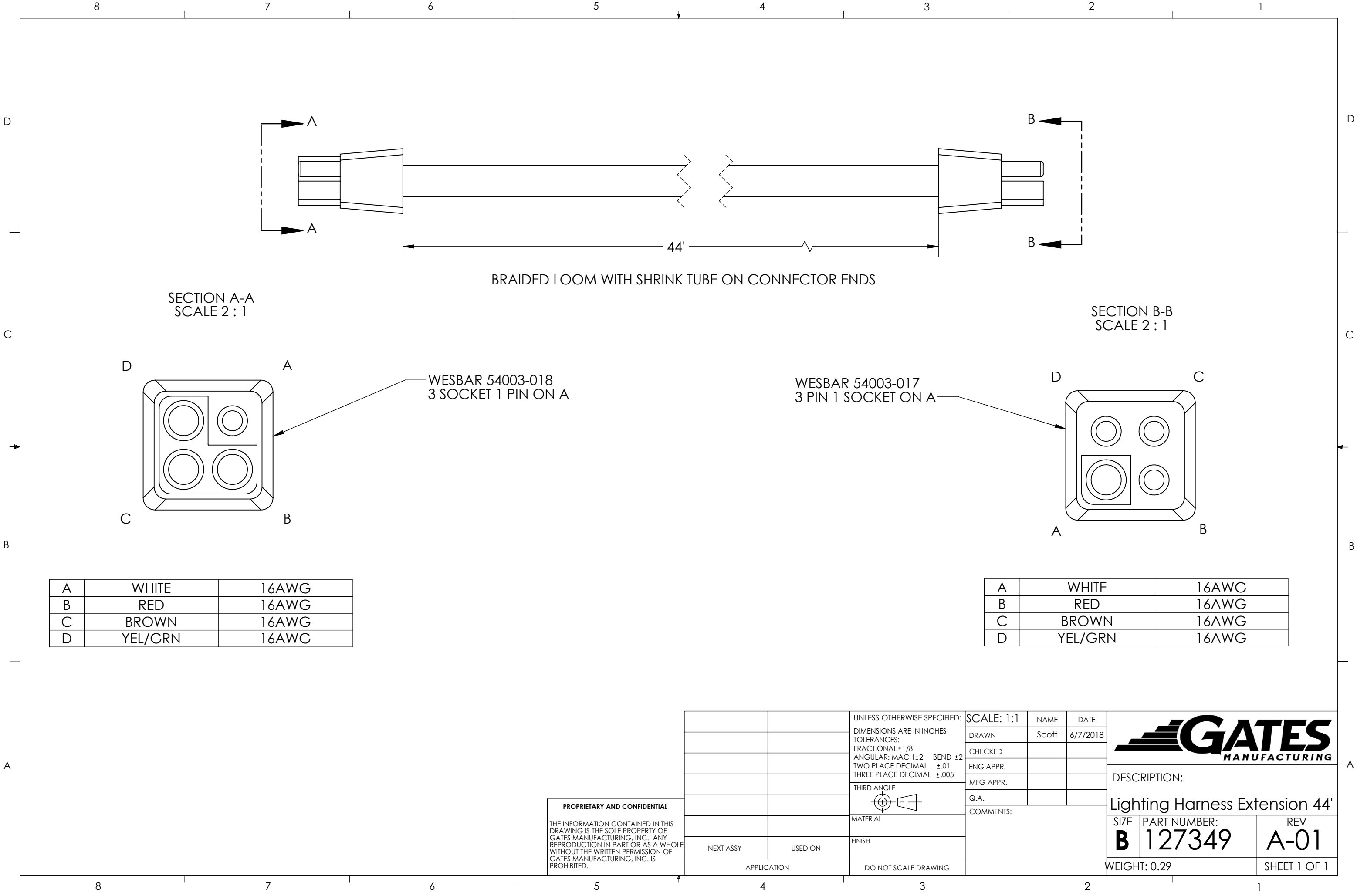
		UNLESS OTHERWISE SPECIFIED:	SCALE: 1:1	NAME	DATE
		DIMENSIONS ARE IN INCHES	DRAWN	Scott	6/7/2018
		TOLERANCES:	CHECKED		
		FRACTIONAL $\pm 1/8$	ENG APPR.		
		ANGULAR: MACH ± 2 BEND ± 2	MFG APPR.		
		TWO PLACE DECIMAL $\pm .01$	Q.A.		
		THREE PLACE DECIMAL $\pm .005$	COMMENTS:		
		THIRD ANGLE			
		MATERIAL			
		FINISH			
NEXT ASSY	USED ON				
APPLICATION		DO NOT SCALE DRAWING			

DESCRIPTION:
Lighting Harness Extension 32'

SIZE	PART NUMBER:	REV
B	127347	A-01

WEIGHT: 0.29 SHEET 1 OF 1





SECTION A-A
SCALE 2 : 1

SECTION B-B
SCALE 2 : 1

WESBAR 54003-018
3 SOCKET 1 PIN ON A

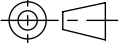
WESBAR 54003-017
3 PIN 1 SOCKET ON A


A	WHITE	16AWG
B	RED	16AWG
C	BROWN	16AWG
D	YEL/GRN	16AWG

A	WHITE	16AWG
B	RED	16AWG
C	BROWN	16AWG
D	YEL/GRN	16AWG

PROPRIETARY AND CONFIDENTIAL

THE INFORMATION CONTAINED IN THIS DRAWING IS THE SOLE PROPERTY OF GATES MANUFACTURING, INC. ANY REPRODUCTION IN PART OR AS A WHOLE WITHOUT THE WRITTEN PERMISSION OF GATES MANUFACTURING, INC. IS PROHIBITED.

		UNLESS OTHERWISE SPECIFIED: DIMENSIONS ARE IN INCHES TOLERANCES: FRACTIONAL $\pm 1/8$ ANGULAR: MACH ± 2 BEND ± 2 TWO PLACE DECIMAL $\pm .01$ THREE PLACE DECIMAL $\pm .005$ THIRD ANGLE 	SCALE: 1:1	NAME	DATE
			DRAWN	Scott	6/7/2018
			CHECKED		
			ENG APPR.		
			MFG APPR.		
			Q.A.		
			COMMENTS:		
NEXT ASSY	USED ON	MATERIAL			
		FINISH			
APPLICATION		DO NOT SCALE DRAWING			



DESCRIPTION:
Lighting Harness Extension 44'

SIZE	PART NUMBER:	REV
B	127349	A-01
WEIGHT: 0.29		SHEET 1 OF 1